

# SAM G3c XI

## Compact Stand-Alone ARINC 818 Converter Module with User Configurable Video Formats

The SAM G3c XI offers the ability to customize video format parameters, including conversion direction, link rate, resolution, and pixel mode through the GRT XI Software. Convert a single channel of ARINC 818 to or from HDMI and store up to 15 video formats (ARINC 818 ICDs) in a single unit.

### APPLICATIONS:

- ATP for Production Displays
- Display Development
- Cockpit Simulation
- Test Pattern Generation
- Interfaces with HDMI Recorders

### FEATURES:

- Implement a new video format (ICDs) in minutes
- Create a library of video formats
- Clone configurations to Velocity XI, Helios XI, or other SAM G3(c) XI devices

### LINK RATES: (Gbps)

- 1.0625
- 2.125
- 3.1875
- 4.25
- 5.0
- 6.375
- 8.5
- 10.0\*

### PIXEL TYPES:

- Monochrome 8-bit
- Monochrome 16-bit
- Color RGB 8:8:8
- Color RGB 5:6:5
- YCbCr 422

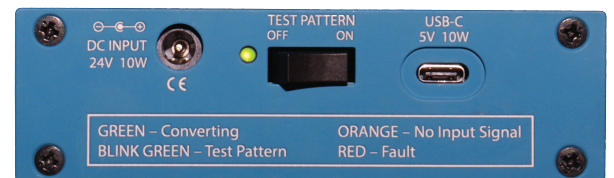
### HDMI OPTIONS:

- XGA 1024x768 @ 60Hz
- HD 1280x720 @ 60Hz
- WXGA 1280x800 @ 60Hz
- SXGA 1280x1024 @ 60Hz
- SXGA+ 1400x1050 @ 60Hz
- WXGA+ 1440x900 @ 60Hz
- UXGA 1600x1200 @ 60Hz
- FHD 1920x1080 @ 60Hz
- DSXGA 2560x1024 @ 60Hz
- UHD 4K 3840x2160 (Reduced Blanking) @ 30Hz

To discuss other format conversions, give us a call!

### OPTIONS:

- XI Base Model: stores 1-4 video formats
- XI Expanded Model: stores 1-15 video formats



\*All pixel types supported up to 8X (8.5 Gbps). Pixel type RGB 8:8:8 supported at 10.0 Gbps; other pixel types coming soon.

GREAT RIVER TECHNOLOGY distributor : TECHWAY S.A.S. - www.techway.com - info@techway.com - +33 1 64 53 37 90



Phone 505.881.6262  
Toll Free 866.478.4491



info@greatrivertech.com



greatrivertech.com



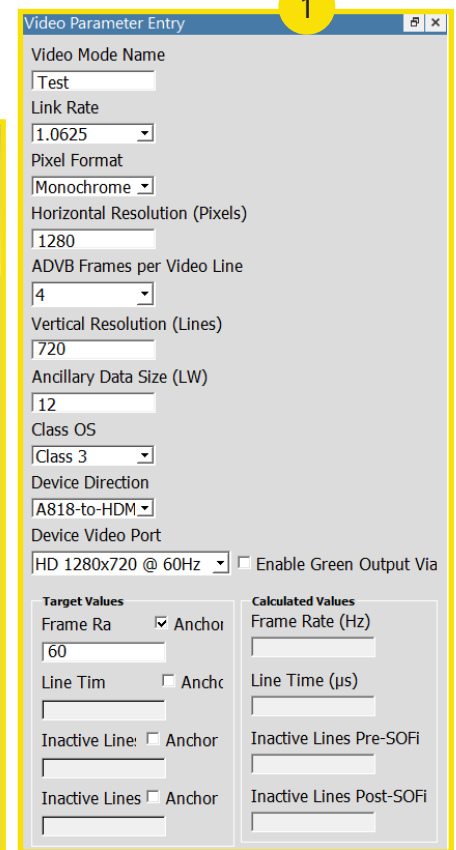
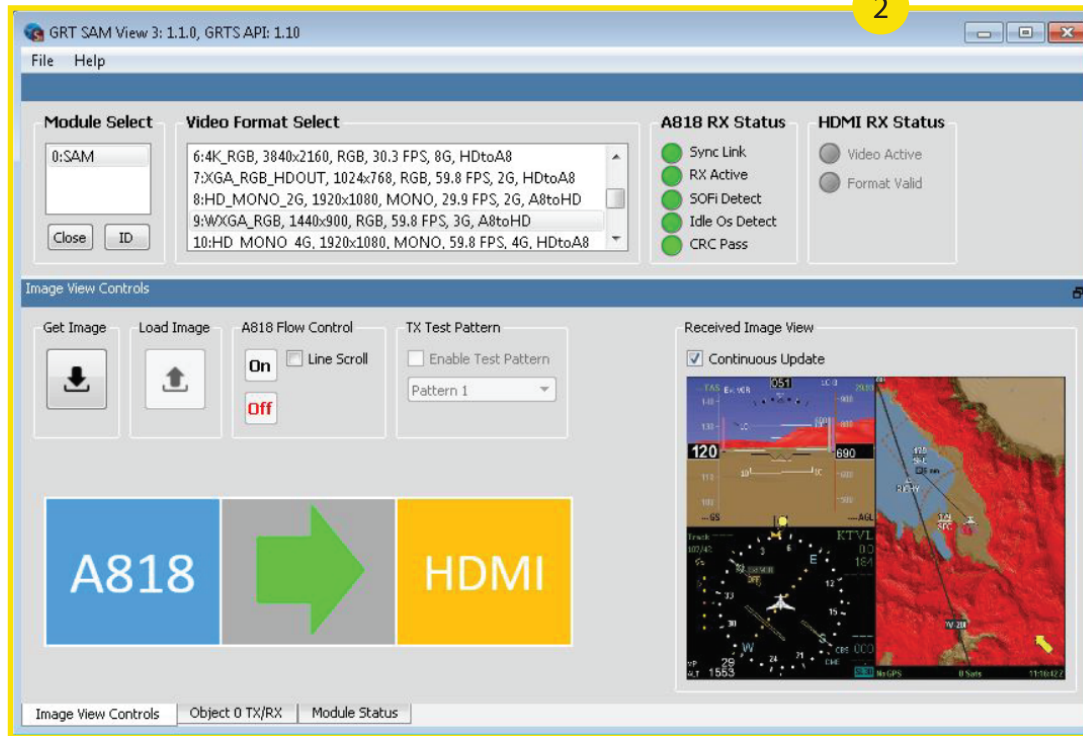
4910 Alameda Blvd NE, Albuquerque NM, 87113

04022024

Upon purchase, the customer confirms having assessed and validated the product's suitability for their specific applications per the product datasheet and standard specifications. It is understood that the items quoted are Commercial Off-The-Shelf (COTS) not tailored for use in safety-critical applications and the responsibility for ensuring the appropriateness of these products for customer-specific applications lies solely with the customer.

## SAM G3 XI LITE TOOL INTERFACES:

- 1 The **GRT XI Configuration Application** allows the user to define video format parameters such as supported link rates and pixel packing modes. Line, frame, or vertical blanking time parameters can be anchored for priority.
- 2 **SAM View Software Application** is used to control individual units in the SAM G3 series once video formats are implemented. Configured video formats can only be changed through the application.



## SPECIFICATIONS:

Operating System	GRT XI Application: Windows 10 & 11 SAM View Application: Windows (64-bit only) 7, 8, 10, & 11	<b>Connections:</b> <ul style="list-style-type: none"> <li>■ 1x USB-C</li> <li>■ 1x 2x5.5mm Barrel Jack DC Power Port</li> <li>■ 1x HDMI</li> <li>■ 1x SFP</li> </ul>
Power Requirement	15W @ 5V or 28V	
Operating Temperature	0 to 50°C (32 to 122°F)	
Weight	1.2lbs; 0.54kgs	
Physical Dimensions	6.8 x 4.4 x 1.4 in; 17.3 x 11.2 x 3.6 cm	

## HOW TO BUY:

Determine your part number for SAM G3c XI (H3cX-A8) as follows:

H3cX-A8- **1** -MM-HH- **2** **3** - **4** **For Example:**  
H3cX-A8-08-MM-HH-1500-BK

<b>Interface</b> <span style="float: right;"><b>1</b></span> O3 = Fiber 1310nm single mode O8 = Fiber 850nm multi mode	<b>Configuration Storage</b> <span style="float: right;"><b>2</b></span> O4 = 4 Formats 15 = 15 Formats	<b>Custom Characters Assigned by GRT</b> <span style="float: right;"><b>3</b></span>	<b>Optional</b> <span style="float: right;"><b>4</b></span> BK = Mounting Bracket
--	---	--	--

To order, consult our Sales page at [www.greatrivertech.com/sales](http://www.greatrivertech.com/sales). If no distributor is listed for your region or country, or if you need additional information about our custom firmware, please fill out the Product Inquiry Form on our website.

GREAT RIVER TECHNOLOGY distributor : TECHWAY S.A.S. - [www.techway.com](http://www.techway.com) - [info@techway.com](mailto:info@techway.com) - +33 1 64 53 37 90