



HELIOS XI

Multi-Channel ARINC 818 Converter System with User Configurable Video Formats

Configure video format parameters, including conversion direction, link rate, resolution, and pixel type through the GRT XI Configuration Application and convert up to 12 channels of ARINC 818 to/from HDMI in a 1U 19-inch mountable rack system. ARINC 818 to HDMI conversion provides a way to view live ARINC 818 video on common HDMI monitors.

FEATURES:

- Modular factory configuration for 4, 6, 8, or 12 channels
- HDMI connectors (6 locking / 6 standard)
- SFP Optical with LC connectors
- 19 inch 1U rack mount, 15 inch deep
- 100 - 240 VAC (28 VDC Option)
- Remote Based Controls (LAN) with C API or Web Interface
 - Query Status
 - Control Test Pattern Outputs

APPLICATIONS:

- Pilot Training Simulators
- Cockpit Development
- Flight Test Recording of ARINC 818 (requires additional equipment)
- Factory Test of ARINC 818 Equipment

LINK RATES: (Gbps)

- 1.0625 ■ 2.125 ■ 3.1875 ■ 4.25
- 5.0 ■ 6.375 ■ 8.5

PIXEL TYPES:

- Color RGB 8:8:8 ■ Monochrome 8-bit
- Color RGB 5:6:5 ■ Monochrome 16-bit
- YCbCr 422

AVAILABLE HDMI RESOLUTIONS:

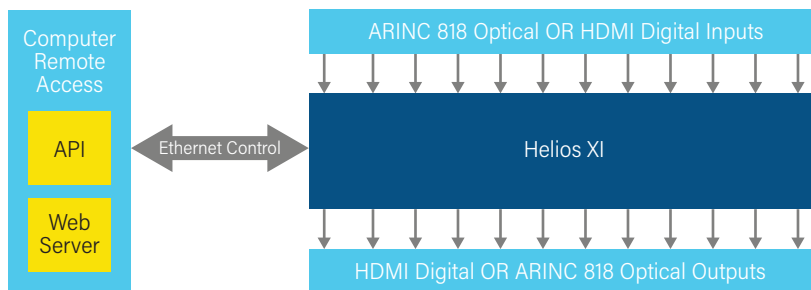
Users may configure the HDMI video port(s) from one of the following options in a pull-down list:

- XGA 1024x768 @ 60Hz
- SXGA 1280x1024 @ 60Hz
- SXGA+ 1400x1050 @ 60Hz
- WXGA+ 1440x900 @ 60Hz
- UXGA 1600x1200 @ 60Hz
- FHD 1920x1080 @ 60Hz
- UHD 4K 3840x2160 @ 30Hz

Contact us for other HDMI format options!



AS AN ARINC 818 TO/FROM HDMI 4, 6, 8, OR 12 CHANNEL CONVERTER:



GREAT RIVER TECHNOLOGY distributor : TECHWAY S.A.S. - www.techway.com - info@techway.com - +33 1 64 53 37 90



Phone 505.881.6262
Toll Free 866.478.4491



info@greatrivertech.com



greatrivertech.com



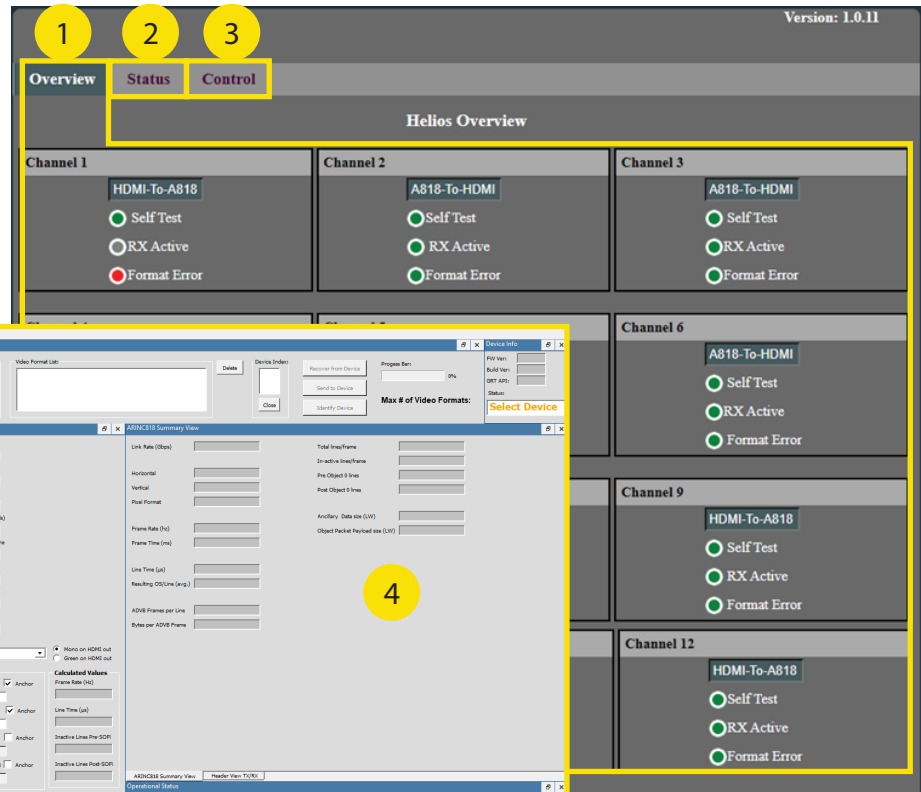
4910 Alameda Blvd NE, Albuquerque NM, 87113

07292024



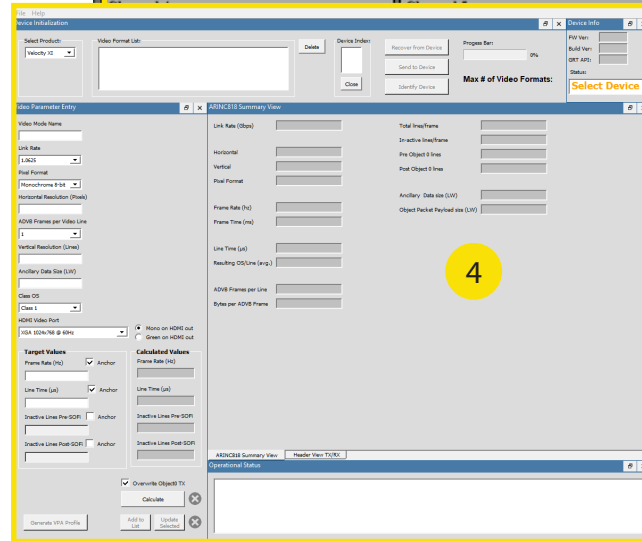
COMMAND, CONTROL, & STATUS INTERFACE:

- 1 The **Overview Tab** displays flow direction, **Self-Test** status, **RX Signal** status, and an indication for **Format Errors** for each individual channel.
- 2 The **Status Tab** displays detailed information about each channel one at a time. The user is able to toggle between any channel they wish to view.
- 3 The **Control Tab** provides the user access to extensive channel functionality such as **Channel Overlay**, **Test Pattern Output**, **Read and Write Registers**, and the ability to **Run a Built In Self Test**.



VIDEO FORMAT CONFIGURATION:

- 4 The **GRT XI Configuration Application** allows the user to define supported video format parameter combinations. Request Tech Note 002XI for details. Line, frame, or vertical blanking time parameters can be anchored for priority.



SPECIFICATIONS:

Operating System	Web Interface: Any API: Windows (64-bit only) 7, 8, 10, & 11 GRT XI Application: Windows 10 & 11	Connections: <ul style="list-style-type: none"> ■ 1x Ethernet RJ45 ■ 1x C14 Power Plug ■ 12x HDMI (6 locking optional) ■ 12x SFP
Power Requirement	100-240 V AC 50-60 Hz (28 VDC Option)	
Operating Temperature	10 to 50°C (50 to 122°F)	
Weight	12.2 lbs; 5.5kgs	
Physical Dimensions	19in x 15in x 1.75in; 48.26cm x 12.7cm x 4.45cm	

HOW TO BUY:

Determine your part number for Helios (HE-A8) as follows:

HEX-A8-MM-O8-MM- **1** - **2**

For Example:

HEX-A8-MM-O8-MM-O8-XXXX

Number of Channels 1

04 = 4 Channels
06 = 6 Channels
08 = 8 Channels
12 = 12 Channels

Custom Characters 2
Assigned by GRT

To order, consult our Sales page at www.greatrivertech.com/sales If no distributor is listed for your region or country, or if you need additional information about our custom firmware, please fill out the Product Inquiry Form on our website.

GREAT RIVER TECHNOLOGY distributor : TECHWAY S.A.S. - www.techway.com - info@techway.com - +33 1 64 53 37 90